

# Klamath Watershed Partnership

## 2021 Annual Report

*205 Riverside Drive, Suite C, Klamath Falls, Oregon 97601*



*Mission: To conserve, enhance and restore the natural resources of the Klamath Basin, while ensuring the long-term sustainability of the regional economy and local communities.*

This report highlights the 2021 accomplishments of the staff and board at Klamath Watershed Partnership. To achieve the goals spelled out in our mission statement, the organizational activities are divided into the following four programs:

- Riparian Restoration/Fisheries Conservation
- Upland Watershed and Forest Health
- Outreach and Technical Assistance
- Irrigation Efficiency and Modernization



## **Riparian Restoration/Fisheries Conservation**

KWP staff completed several riparian restoration projects in 2021, a challenging year with drought and wildfire complicating efforts for all parties. We coordinated wetlands development, water quality improvements, in-stream habitat, as well as improvements to cattle management and farming operations that benefit riparian zones, improve productivity, and reduce grazing pressure while keeping ranch operations viable in the process.

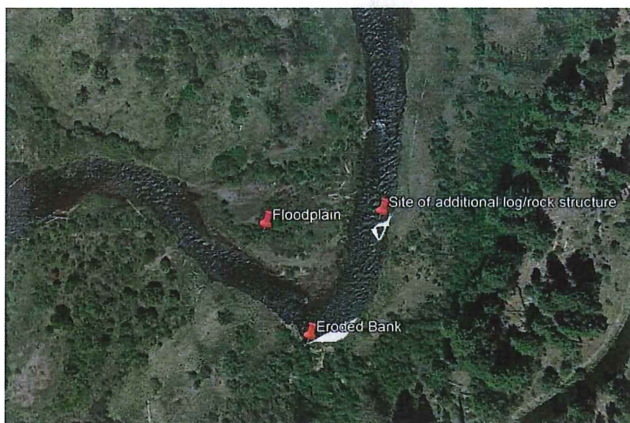
KWP works with a wide range of partners, including but not limited to:

Oregon Watershed Enhancement Board, US Fish and Wildlife Service, Natural Resources Conservation Service, Klamath Soil and Water Conservation District, Oregon Department of Agriculture, Klamath Tribes, US Forest Service, Trout Unlimited, Sustainable Northwest, Oregon Department of Environmental Quality, The Nature Conservancy, Oregon Institute of Technology, Oregon Department of Forestry, Oregon Department of Fish and Wildlife, Green Diamond, and many private farms and ranches throughout the county that make this work possible. Some photos and descriptions of examples of this work during the 2021 calendar year are included below.

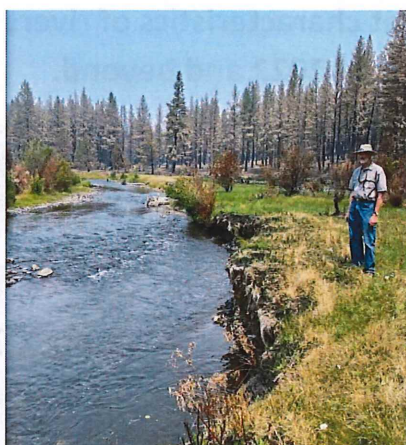
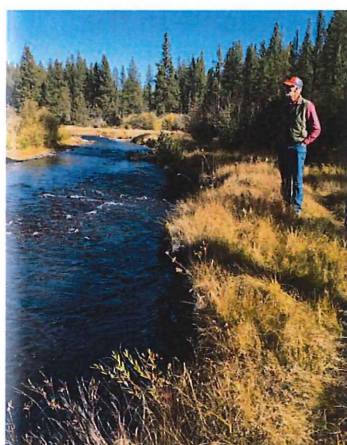


**Riparian and upland plantings were completed for private ranches on the Williamson River to improve habitat conditions for fish and pollinators. These projects are supported by the US Fish and Wildlife Service Partners Program will be monitored for success and additional plantings continue in 2022.**





In 2021, KWP completed an erosion control and in-stream habitat improvement project for private landowners on the North Fork Sprague. This included logs and boulders engineered for habitat improvement and bank stabilization, as well as riparian plantings. This area was affected by the Bootleg fire, so the timing of planting was good, as well as the ability to provide sediment capture in the river after the fires in the fall. Planting work will continue here in 2022.

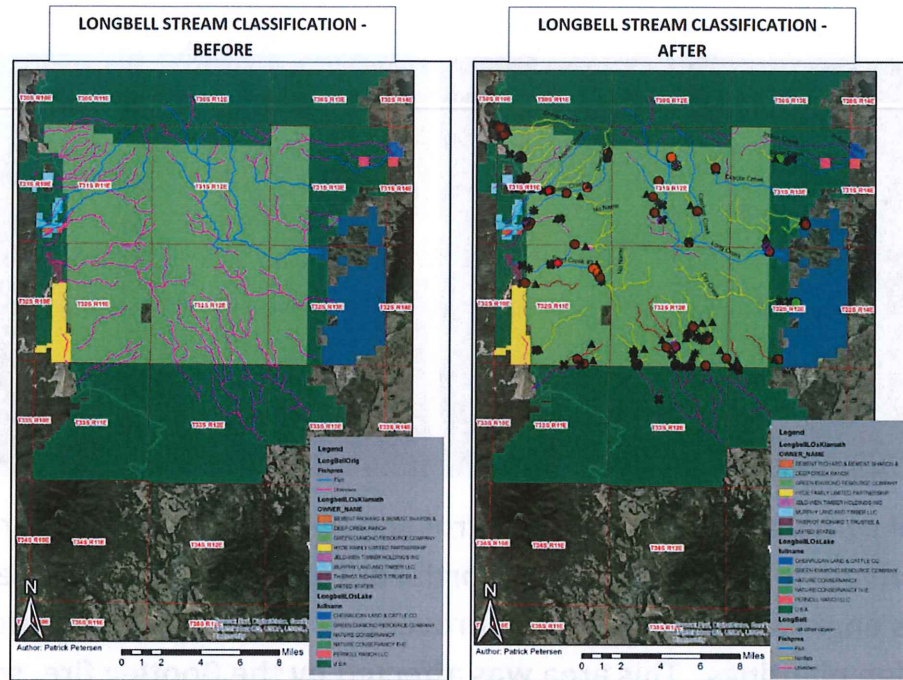


KWP continues to work with US Fish and Wildlife Service as well as Klamath Tribes partners on the use of Beaver Dam Analogues and Post Assisted Log Structures, beaver-inspired restoration techniques. Additional funding through the Oregon Watershed Enhancement Board will be used to develop these structures on the Sycan and Sprague rivers, with benefits for sediment capture, soil moisture retention, and fish habitat.

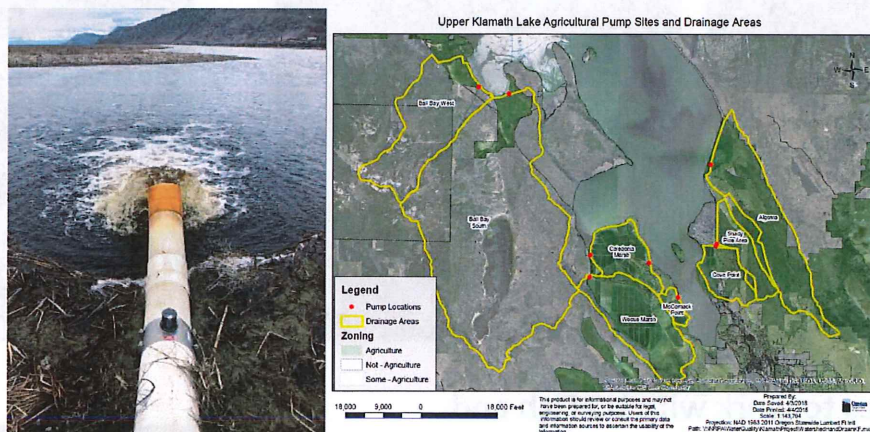


Figure 1. Map of site locations. Red dots show preliminary wood placement locations proposed by the Klamath Tribes Restoration Director.





Stream Classification Database work continued in 2021, assisting Oregon Department of Forestry and Oregon Department of Fish and Wildlife with updated mapping of the habitat characteristics of rivers and streams in the county. This work will continue in 2022 and beyond.

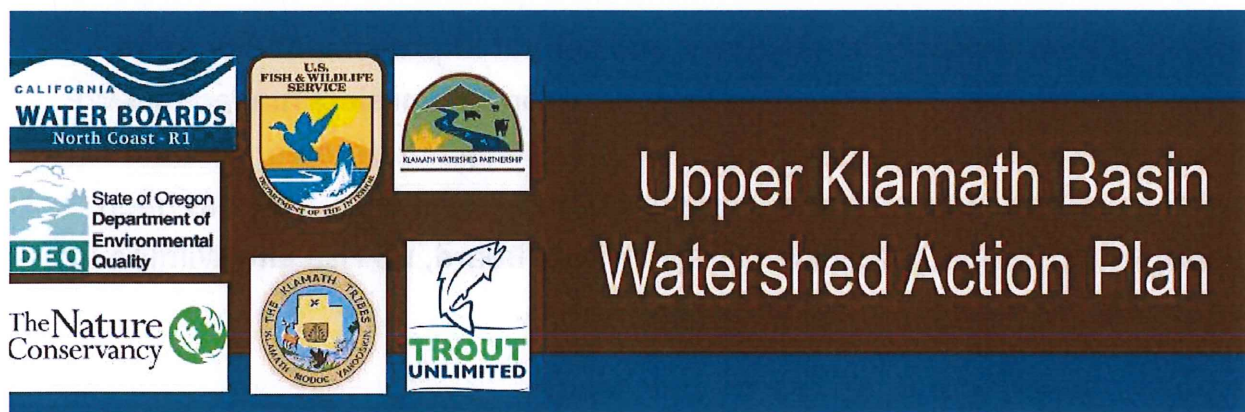


Water quality improvements along Upper Klamath Lake are a priority in the Upper Klamath Basin, and KWP has been involved through restoration planning at Lakeside Farms, identification of restoration opportunities at Modoc Point, and technical assistance support in determining feasible solutions. This is a coordinated effort with many landowners, agencies, and private business interests working together to determine best options for success.





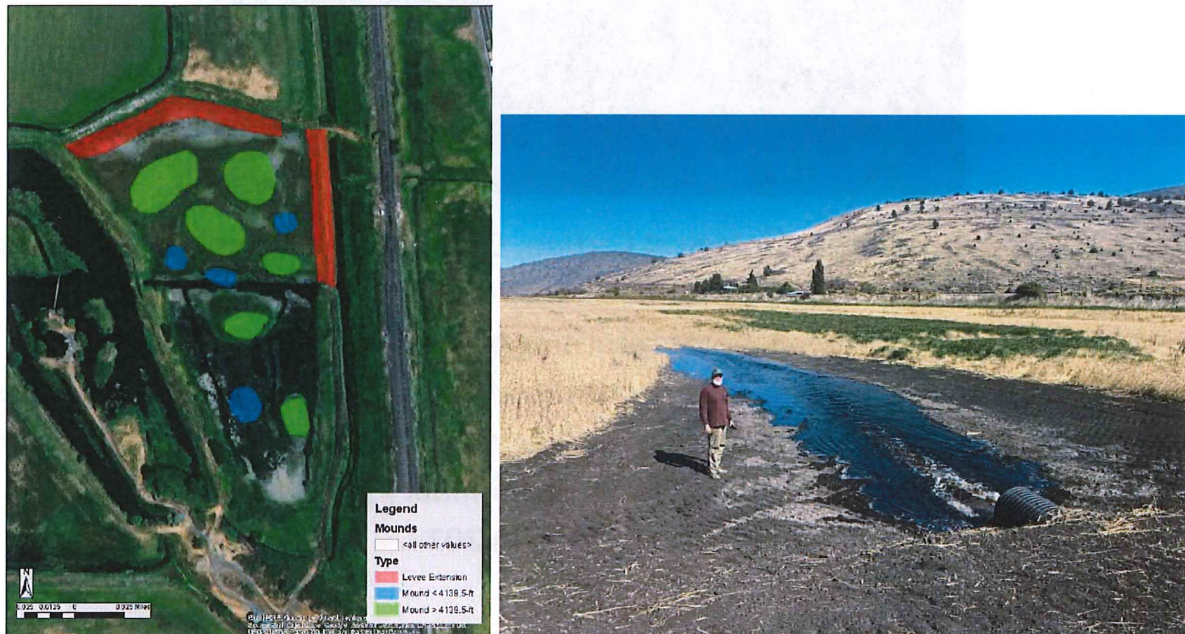
Delaney Forestry Services, Biological Carbon, Oregon Department of Agriculture, and KWP were supported by IM-11 PacifiCorp funding in an effort to study biochar filtration of pumped water returning to the lake. The goal is to assist landowners with maintaining clean water in irrigation ditches and return flows, to understand the feasibility of using biochar mixes to capture phosphorous and sediments to improve water quality. The preliminary pilot project was completed in 2021 with potential to expand in 2022.



In 2021, KWP continued working with a group of conservation organizations to address large-scale planning in the Upper Klamath Basin. This partnership of Klamath Basin entities is known as the Upper Klamath Basin Watershed Action Plan Team (UKBWAP Team). The team includes The Nature Conservancy (TNC), Trout Unlimited (TU), Klamath Watershed Partnership (KWP), The Klamath



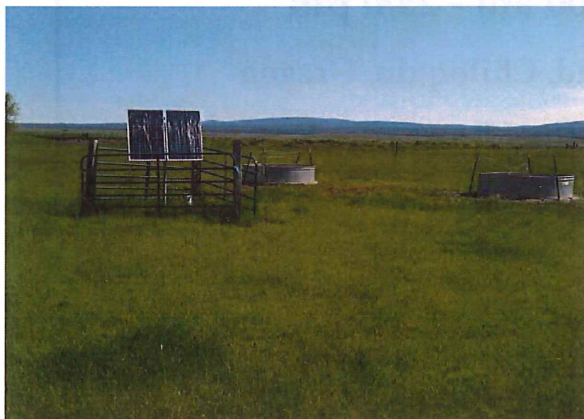
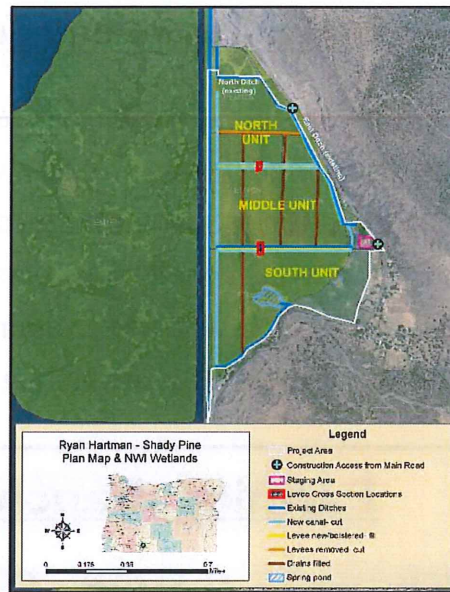
Tribes (TKT), Oregon Department of Environmental Quality (ODEQ), the US Fish and Wildlife Service Partners for Fish and Wildlife Program (USFWS), and the North Coast Regional Water Quality Control Board (Regional Water Board) in California. The UKBWAP Team is committed to supporting voluntary restoration actions on private lands, while assisting farmers and ranchers who must contend with concerns of water quality and water availability.



Lakeside Farms wetland development and habitat improvement alongside Upper Klamath Lake is perhaps the largest restoration project funded by KWP. Visible just north of town off of Highway 97 heading out of town, wetland construction began in 2021 and continues into the next year. This has been supported by Oregon Watershed Enhancement Board, US Fish and Wildlife Service Partners program, and local landowners.



The Shady Pine Project will improve infrastructure for wetland development and improve spring-fed ponds along the east side of Upper Klamath Lake. This project began in 2021 with permits ready to begin construction work that will continue into 2022.



A lack of water in irrigation ditches and limited means to provide water for livestock created conditions that could have drastically impacted water quality over the summer of 2021. In March, a working group was formed to address the problem of stock water availability away from rivers and streams during the extreme drought conditions. KWP provided a letter of support, and various partners (USFWS, Sustainable Northwest, Trout Unlimited, The Klamath Tribes) pushed for state funding to address this problem. The US Fish and Wildlife Service provided funding for immediate help and a state initiative will likely provide additional funds for ranchers to obtain stock water wells in the upcoming year.



## **Outreach and Technical Assistance**

Outreach and education are an important part of the technical assistance KWP provides, distributing information to a wide array of stakeholders ranging from facilitators and politicians to funders and landowners implementing projects on the ground. 2021 was a challenging year, with severely restricted irrigation water, dry domestic wells, and wildfire affecting a large portion of the county. Following is a list of some of the KWP outreach and technical assistance efforts during 2021.

### **Farming, Ranching, and Drought:**

#### **Klamath County Field Day and Seminar**



**Thursday, May 20<sup>th</sup>, 10:00 am - 2:00 pm**

**Meet at 19355 Sprague River Road, Chiloquin, Oregon**

**Lunch to be served at 23121 Sprague River Road after field tour!**

*Technical Assistance and Support Provided By...*

As part of the Watershed Action Planning Team, KWP is leading efforts to provide education, training, and technical assistance opportunities to landowners in the region. In May, we hosted a seminar with speakers from OSU Extension and other natural resource management organizations.





# DROUGHT-RELATED FORAGE PESTS IN KLAMATH: EDUCATION AND TREATMENT SEMINAR



**JULY 30TH - FRI | 10AM - 2PM**

**WAYNE RANCH:  
10875 SPRAGUE RIVER RD  
CHILOQUIN, OR 97624**

*Turn north into ranch driveway  
and continue to headquarters*



**Seminars in conjunction with partners from across the state were held to distribute information as promptly as possible.**

**Technical Support has been provided to the Soil and Water Conservation District on the Strategic Investment Partnership in the Sprague region with support from the Oregon Department of Agriculture.**



## **Upland Watershed and Forest Health**

How we manage our upland fields and forests eventually affects our rivers and streams. KWP has made an effort to focus on upland opportunities for improvement, including grant writing and field work to improve forest health, increase juniper treatment, and weed management Klamath county.



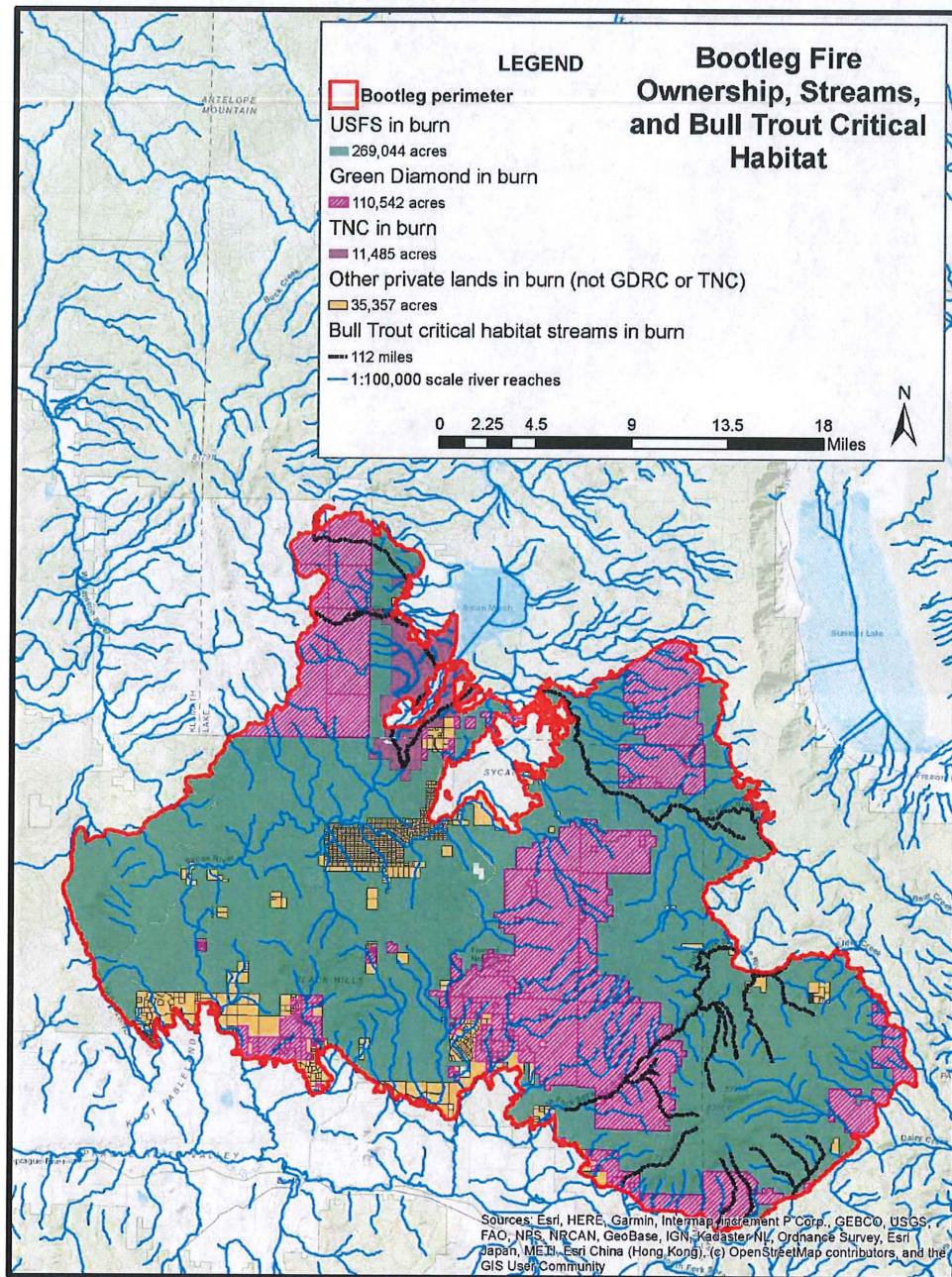
Forest health and wildfire risk reduction projects continued in 2021 as part of the Chiloquin Community Forest and Fire Project, with funding from the Oregon Watershed Enhancement Board. The photo above shows fuel break brush clearing along a driveway.





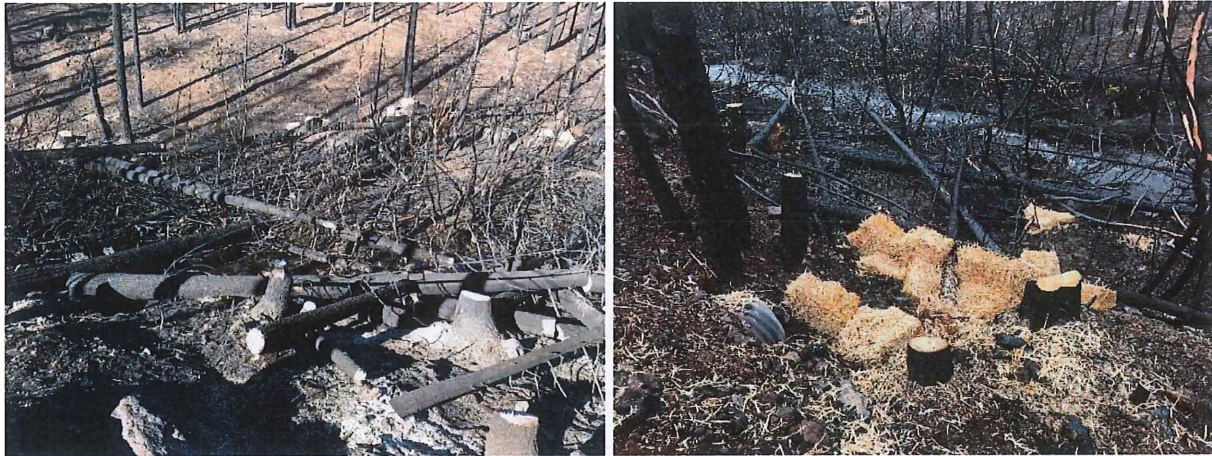
**Before and after photos of forest thinning and brush reduction work completed in Chiloquin. This project allowed KWP to treat almost 700 acres of private and state land between 2019 and 2022.**





The Bootleg Fire, which started July 6, 2021, burned more than 410,000 acres and was the third largest wildfire in recent Oregon history. Before the fire was even out, KWP worked with other restoration partners in the basin and in Lake County to discuss and plan recovery efforts. Project partners have since initiated various erosion control, stabilization, energy dissipation, and habitat restoration practices throughout the fire area.





KWP has been working with Green Diamond Resource Company, Oregon Department of Forestry, Oregon Department of Fish and Wildlife, and US Fish and Wildlife Service to begin measures to reduce erosion and stream power in high priority bull trout critical habitat streams.

**Klamath Watershed Partnership**  
Published by Bill Lehman • September 16

---

**HAVE YOU LOST LIVESTOCK DUE TO WILDFIRE?**  
CONSIDER APPLYING FOR THE USDA FARM SERVICE AGENCY LIVESTOCK INDEMNITY PROGRAM (LIP)

**Contacts in Affected Counties:**

- Deschutes/Jefferson/Crook County FSA: 541-925-4358 ext. 2
- Jackson/Multnomah County FSA: 503-655-3144 ext. 2
- Joseph/Jackson/Josephine County FSA: 541-673-9071 ext. 2
- Klamath County FSA: 541-885-6924 ext. 2
- Lake County FSA: 541-447-2393 ext. 2
- Lane County FSA: 541-465-6443 ext. 2
- Lincoln/Linn County FSA: 541-947-5625 ext. 2
- Malheur County FSA: 541-888-9809 ext. 2
- Marion/Polk County FSA: 503-998-7471 ext. 2
- Wallowa/Heard River County FSA: 541-268-4528 ext. 2
- Washington/Clatsop/Columbia/Tillamook County FSA: 503-448-3178 ext. 2
- Yamhill County FSA: 503-472-1474 ext. 2

**Am I Eligible?**  
To be eligible for LIP you must have owned the livestock as of the day of the eligible loss condition, had the production and market value associated with the production of the livestock and had legal ownership of the eligible livestock for which benefits are being requested.

**Are my Livestock Eligible?**  
Eligible livestock must have been maintained or produced for commercial use, die in excess of normal mortality, die no later than 30 calendar days after the ending date of the loss condition. Eligible livestock include: adult/non-adult beef cattle, adult/non-adult buffalo, adult/non-adult dairy cattle, elk, alpacas, caribou, deer, emus, equine, goats, lambs, poultry, reindeer, sheep, and swine.

**Deadlines:**

- Notice of Loss filed within 30 days of when the loss was first apparent.
- Application for payment by February 1, 2021.

**What documentation do I need?**  
**Acceptable Proof of Death:**

- Participants must provide acceptable documentation of livestock deaths claimed on CCC-852. Adequate documentation must be provided that proves the death of the livestock occurred as a direct result of the eligible loss condition. This documentation must provide sufficient data that identifies the quantity and the livestock kind/sex/age and weight range. Documents that may be provided as acceptable evidence may include, but are not limited to, the following:
  - Rendering truck receipts or certificates
  - Veterinary records
  - Contemporaneous producer records existing at the time of event

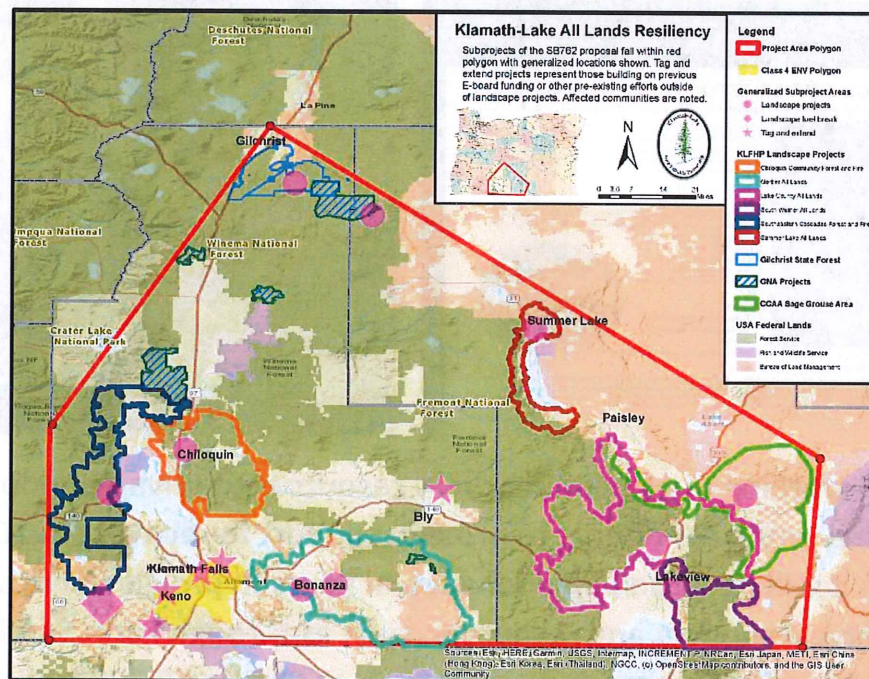


KWP has been working to provide recovery resources to private landowners in the Bootleg Fire, while continuing to provide support to recovery in 2020's 242 Fire. Although it will be a challenge for several years to provide landowners with adequate technical support and resources, such as through Farm Service Agency, there have been some successes, such as planting 8,700 trees in the 242 with OWEB funding and seedlings donated by Green Diamond.





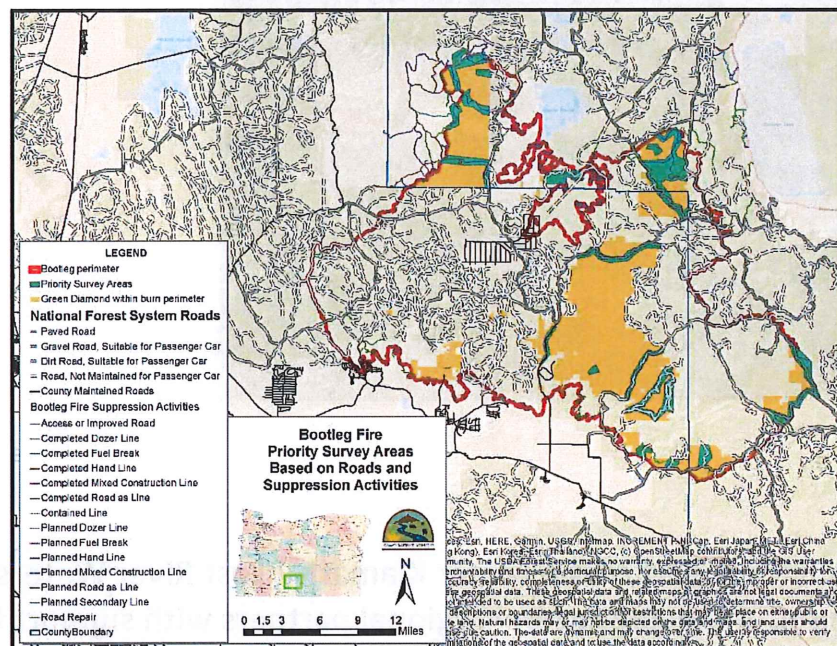
KWP is a core member of the Klamath-Lake Forest Health Partnership (KLFHP), which is a cooperative network of diverse local and regional partners who have come together to address forestland management in the region. With more than 600,000 acres burning across both counties in the last two years, there is a critical need to protect our communities and natural resources from wildfire. Project partners are currently looking to increase the pace and scale of wildfire resiliency work through a ~\$5 million grant request. This project, if funded in early 2022, will benefit multiple small communities and businesses.







KWP continues to support landowners with noxious weed treatment including informational support as well as funding to the Klamath County Weed Program intended to help manage a variety of invasive upland and riparian plants. KWP is working with local partners to develop a Cooperative Weed Management Area to facilitate a more coordinated and robust cross-boundary weed program in Klamath County.

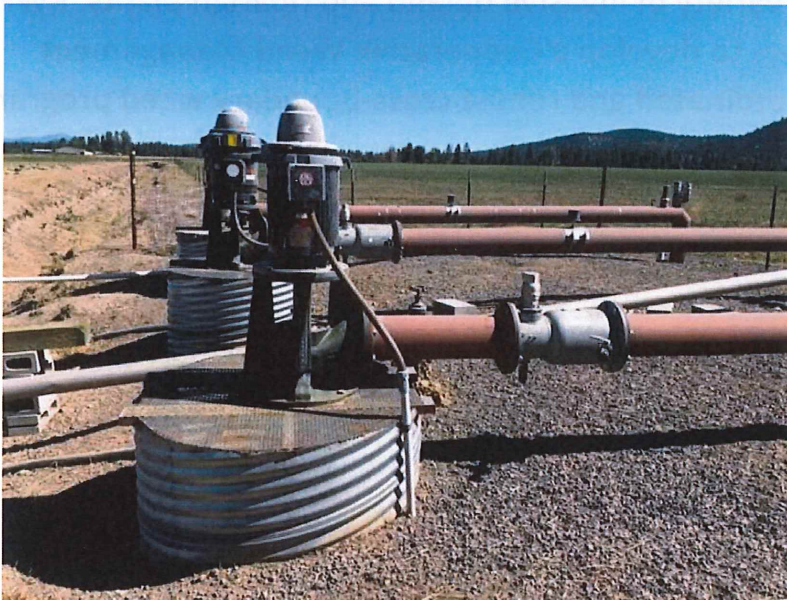


KWP is working with Green Diamond, USFS, Klamath County, and others to plan strategic weed surveys and treatment in the Bootleg Fire footprint. This project has been proposed to the Oregon Department of Agriculture, and if funded will begin in March 2022.



## **Irrigation Efficiency and Modernization Program**

With the support of Sustainable Northwest (SNW), the KWP Energy and Water Savings Program was established to provide rural Klamath county with on-farm technical assistance, as well as grant funding support specific to energy and irrigation water conservation projects. KWP maintains a list of renewable energy assistance programs specific to irrigation and continues to write grants for these alternative energy options in the Upper Klamath Basin. In 2020 SNW and KWP teamed with Oregon Institute of Technology, Wy-East RC&D, and Lake Country Resource Initiative to continue utilizing USDA grant assistance for landowners interested in assessment and implementation of renewable energy projects.



**KWP continues to be a part of the Lower Klamath / Lost River Watershed Stewardship team. Involving several regional partners with support from the North Coast Regional Water Quality Control Board, this work should expand in 2022 to provide plans for irrigation improvement and the most resilient options for management of resources in the Klamath Project in the near future.**





## Summary Balance Sheet as of January 7, 2022

### ASSETS

Current Assets	
Checking/Savings	172,352.29
Accounts Receivable	-80.79
Other Current Assets	4,123.65
Total Current Assets	<u>176,395.15</u>
Fixed Assets	17,959.96
TOTAL ASSETS	<u>194,355.11</u>

### LIABILITIES & EQUITY

Liabilities	
Current Liabilities	
Accounts Payable	16,900.02
PPP	26,188.49
Payroll Liabilities	12,004.08
Total Current Liabilities	<u>38,192.57</u>
Total Liabilities	55,092.59
Equity	<u>99,827.50</u>
TOTAL LIABILITIES &	
EQUITY	194,355.11



